

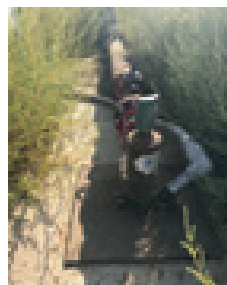
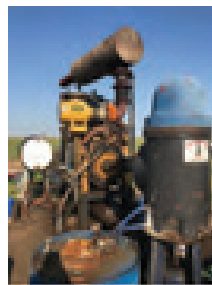
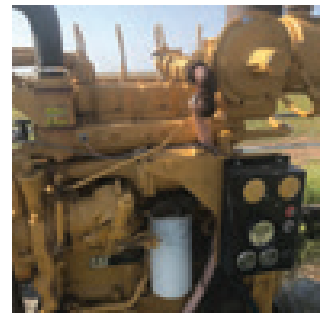


P.O. BOX 58227
 AMARILLO, TEXAS 79159
 PH: 806-553-6165

FOR SALE

MOORE COUNTY LINE 1565

\$4,147,250



PROPERTY DESCRIPTION

LOCATION: 13 miles east of Dumas, TX on FM 152 sitting on the Moore / Hutchinson County line.

ACCESS: FM 152 runs along N Boundary of property. FM 1913 runs along east boundary.

SPECIAL FEATURE: Latest well drilled produces 1,000 gpm. Well is powered by a Caterpillar engine with over 200 HP.

WELLS POWERED BY: 3 wells are pumped with electric submersible pumps powered by a Cat engine with a generator. 2 wells have turbine pumps with Cat engines.

OTHER IMPROVEMENTS: 1 - 2,612 SF manufactured home in excellent condition with covered porch, deck and carport, 1 barn, working pens, estimated 15 miles of 5 strand barbed wire fence with steel corners and gates. Set of working pens with loading chute. Sprinkler pivots protected with pipe fence.

POWER: 3- phase electricity runs along east boundary of property, single phase runs to house from north boundary.

STATE: TEXAS

COUNTY: MOORE

PROPERTY TYPE:
 Irrigated Farm/Cattle Operation

ACRES: 1,565

IRRIGATION WELLS: Total of 8 wells, 7 irrigation wells, one domestic well.

SPRINKLERS: 1- 2007 Valley 20 tower ½ mile sprinkler and 1 Reinki 19 tower ½ mile sprinkler.

WATER PRODUCTION: Of the 7 irrigation wells, 6 wells are in use producing approximately 2,000 GPM.